

btt User Guide

Alan D. Brunelle (Alan.Brunelle@hp.com)

30 October 2008

1 Introduction

btt is a post-processing tool for the block layer IO tracing tool called blktrace. As noted in its Users Guide, blktrace

is a block layer IO tracing mechanism which provides detailed information about request queue operations up to user space.

blktrace is capable of producing tremendous amounts of output in the form of multiple individual traces per IO executed during the traced run. It is also capable of producing some general statistics concerning IO rates and the like. **btt** goes further and produces a variety of overall statistics about each of the individual handling of IOs, and provides data we believe is useful to plot to provide visual comparisons for evaluation.

This document will discuss **btt** usage, provide some sample output, and also show some interesting plots generated from the data provided by the **btt** utility.

A short note on the ordering of this document – the actual command-line usage section occurs relatively late in the document (see section 11), as we felt that discussing some of the capabilities and output formats would make the parameter discussion easier.

This document refers to the output formats generated by **btt** version 2.00. However, the descriptions are general enough to cover output formats prior to that.

Contents

| | | |
|-----------|--|-----------|
| 1 | Introduction | 1 |
| 2 | Getting Started | 3 |
| 3 | Output Overview | 4 |
| 4 | Data Files Output | 11 |
| 5 | Activity Data File | 12 |
| 6 | Histogram Data Files | 14 |
| 7 | iostat Data File | 16 |
| 8 | Per-IO Data File | 17 |
| 9 | Latency Data Files | 19 |
| 10 | Seek Data Files | 20 |
| 10.1 | Seeks Per Second | 22 |
| 11 | Command Line | 23 |
| 11.1 | --seek-absolute/-a | 23 |
| 11.2 | --all-data/-A | 23 |
| 11.3 | --dump-blocknos/-B | 24 |
| 11.4 | --range-delta/-d | 24 |
| 11.5 | --devices/-D | 24 |
| 11.6 | --exes/-e | 24 |
| 11.7 | --help/-h | 24 |
| 11.8 | --input-file/-i | 24 |
| 11.9 | --iostat/-I | 25 |
| 11.10 | --d2c-latencies/-l | 25 |
| 11.11 | --periodic-latencies/-L | 25 |
| 11.12 | --seeks-per-second-m | 25 |
| 11.13 | --dev-maps/-M | 25 |
| 11.14 | --output-file/-o | 25 |
| 11.15 | --per-io-dump/-p | 25 |
| 11.16 | --per-io-tress/-P | 25 |
| 11.17 | --q2c-latencies/-q | 25 |
| 11.18 | --active-queue-depth/-Q | 26 |
| 11.19 | --no-remaps/-r | 26 |
| 11.20 | --seeks/-s | 26 |
| 11.21 | --iostat-interval/-S | 26 |
| 11.22 | --time-start/-t and --time-end/T | 26 |
| 11.23 | --unplug-hist/-u | 26 |

| | |
|-------------------------------------|-----------|
| 11.24--version/-V | 27 |
| 11.25--verbose/-v | 27 |
| 11.26--easy-parse-avgs/-X | 27 |
| 11.27--q2d-latencies/-l | 29 |
| 12 bno_plot.py | 30 |
| 13 Sample btt Output | 32 |

2 Getting Started

The simple pipeline to get going with **btt** is to perform the following steps:

1. Run **blktrace**, specifying whatever devices and other parameters you want. You must save the traces to disk in this step, **btt** does not work in live mode.
2. After tracing completes, run **blkrawverify**, specifying all devices that were traced (or at least on all devices that you will use **btt** with – section 11.5 shows how you can dictate which devices to use with **btt**). If **blkrawverify** finds errors in the trace streams saved, it is best to recapture the data – utilizing **btt** on *unclean* trace files produces inconsistent results.

While this step is optional, we have found that performing this helps to ensure data coming from **btt** makes the most sense.

3. Run **blkparse** with the **-d** option specifying a file to store the combined binary stream. (e.g.: **blkparse -d bp.bin ...**).
blktrace produces a series of binary files containing parallel trace streams – one file per CPU per device. **blkparse** provides the ability to combine all the files into one time-ordered stream of traces for all devices.
4. Run **btt** specifying the file produced by **blkparse** utilizing the **-i** option (e.g.: **btt -i bp.bin ...**).

3 Output Overview

The major default areas of output provided by `btt` include:

average component times across all IOs The time line of each IO is broken down into 3 major regions:

1. Time needed to insert or merge an incoming IO onto the request queue. This is the average time from when the IO enters the block IO layer (queue trace) until it is inserted (insert trace).

This is denoted as $Q2I$ time.

This is also broken down into two component times¹:

Q2G Time needed to *get* a request (get request trace).

G2I Time needed to put that request onto the request queue (insert trace).

For *merged* requests – an incoming request that is merged with a previously submitted request – we calculate $Q2M$, the amount of time between the queue trace and the merge trace.

2. Time spent on the request queue. The average time from when the IO is inserted or merged onto the request queue, until it is issued (issue trace) to the lower level driver.

Referred to as $I2D$ time².

3. Driver and device time – the average time from when the actual IO was issued to the driver until is completed (completion trace) back to the block IO layer.

This is referred to as the $D2C$ time

Two other sets of results are presented in this section:

1. $Q2Q$ which measures the time between queue traces in the system. This provides some idea as to how quickly IOs are being handed to the block IO layer.
2. $Q2C$ which measures the times for the complete life cycle of IOs during the run³

¹On occasion there are also some time spent *sleeping* waiting for a request. That occurs between the Q and G operations. You will see these listed as **S2G** times.

²The *issue* trace is represented by a D in the blkparse output, hence its usage in `btt` to refer to issue traces. Note that an I is used to refer to *insert* traces.

³One of the areas that needs some work in `btt` is to better understand the multiplex nature of IOs during a run. In theory, one would like $Q2I + I2D + D2C = Q2C$ however, typically there are multiple queue traces that are combined via merges into a single IO issued and completed. We currently average the queue-to-insert and queue-to-merge times, and thus tend to be quite close to the expected equation.

For each row in this output, we provide a minimum, average, maximum (which are all presented in seconds), and overall count. As an example⁴:

| ALL | MIN | AVG | MAX | N |
|-----|-------------|-------------|-------------|---------|
| Q2Q | 0.000000058 | 0.000012761 | 9.547941661 | 2262310 |
| Q2I | 0.000000272 | 0.000005995 | 0.104588839 | 2262311 |
| I2D | 0.000001446 | 0.094992714 | 0.239636864 | 2262311 |
| D2C | 0.000193721 | 0.030406554 | 1.634221408 | 2262311 |
| Q2C | 0.000207665 | 0.125405263 | 1.830917198 | 2262311 |

When tracking *device mapper* devices, we also break down the *Q2A* and *Q2C* times for those IOs.

Device Overhead Using the data from the previous chart, we can then provide some idea as to where IO spend most of the time on average. The following output shows the percentage of time spent in each of the phases of an IO⁵

| DEV | Q2G | G2I | Q2M | I2D | D2C |
|----------|---------|---------|---------|----------|----------|
| (8, 80) | 0.0013% | 0.0004% | 0.0006% | 88.5005% | 11.4988% |
| Overall | 0.0003% | 0.0001% | 0.0041% | 21.4998% | 78.4958% |

Device Merge Information A key measurement when making changes in the system (software *or* hardware) is to understand the block IO layer ends up merging incoming requests into fewer, but larger, IOs to the underlying driver. In this section, we show the number of incoming requests (Q), the number of issued requests (D) and the resultant ratio. We also provide values for the minimum, average and maximum IOs generated.

Looking at the following example:

| DEV | #Q | #D | Ratio | BLKmin | BLKavg | BLKmax | Total |
|-----------|---------|-------|-------|--------|--------|--------|---------|
| (68, 64) | 2262311 | 18178 | 124.5 | 2 | 124 | 128 | 2262382 |

⁴As with this display, the author has taken some liberty in reformatting the output for better display on the printed page.

⁵It should be noted that incoming requests either go through:

1. Q2G + Q2I
or
2. Q2M

before proceeding to I2D and D2C.

we see that (on average) the block IO layer is combining upwards of 125 incoming requests into a single request down the IO stack. The resultant average IO size is 124 blocks.

Device Seek Information Another useful measure is the variability in the sector distances between consecutively *received* – *queued* and *submitted* – *issued* IOs. The next two sections provides some rudimentary statistics to gauge the general nature of the sector differences between IOs. Values provided include the number of seeks (number of IOs submitted to lower level drivers), the *mean* distance between IOs, the *median* value for all seeks, and the *mode* - the value(s) and the counts are provided for the latter.

The first of the two sections displays values for Q2Q seek distances – providing a set of indicators showing how close incoming IO requests are to each other. The second section shows D2D seek distances – providing a set of indicators showing how close the IO requests are that are handled by underlying drivers.

| DEV | NSEEKS | MEAN | MEDIAN | MODE |
|-----------|--------|---------|--------|----------|
| ----- | ----- | ----- | ----- | ----- |
| (68, 64) | 18178 | 19611.3 | 0 | 0(17522) |

We have almost exclusively seen median and mode values of 0, indicating that seeks tend to have an equal amount of forward and backwards seeks. The larger the count for the mode in comparison to the total number of seeks is indicative as to how many IOs are coming out of the block IO layer in adjacent sectors. (Obviously, the higher this percentage, the better the underlying subsystems can handle them.)

Request Queue Plug Information During normal operation, requests queues are *plugged* and during such times the IO request queue elements are not able to be processed by underlying drivers. The next section shows how often the request queue was in such a state.

| DEV | # Plugs | # Timer Us | % Time Q Plugged |
|-----------|---------|------------|------------------|
| ----- | ----- | ----- | ----- |
| (68, 64) | 833(| 0) | 0.356511895% |

There are two major reasons why request queues are unplugged, and both are represented in the above table.

1. Explicit unplug request from some subsystem in the kernel.
2. Timed unplugs, due to a request queue exceeding some temporal limit for being plugged.

The total number of unplugs is equal to the number of plugs less the ones due to timer unplugs.

IOs per Unplug & Unplugs-due-to-timeout In this subsection one can see the average number of IOs on the request queue at the time of an unplug or unplug due to a timeout. The following sample shows a sample of both unplug sections:

===== Plug Information =====

| DEV | # Plugs | # Timer Us | % Time Q Plugged |
|----------|---------|------------|------------------|
| (8, 0) | 1171 | 123) | 0.280946640% |
| (8, 32) | 4 | 0) | 0.000325469% |
| Overall | # Plugs | # Timer Us | % Time Q Plugged |
| Average | 587 | 61) | 0.140636055% |

| DEV | IOs/Unp | IOs/Unp(to) |
|----------|---------|-------------|
| (8, 0) | 9.2 | 8.8 |
| (8, 32) | 2.5 | 0.0 |
| DEV | IOs/Unp | IOs/Unp(to) |
| Overall | 9.2 | 8.8 |

This table and the preceding one have to be considered together – in the sample output in the immediately preceding table one can see how the larger number of data values for device (8,0) dominates in the overall average.

Active Requests At Q Information An important consideration when analyzing block IO schedulers is to know how many requests the scheduler has to work with. The metric provided in this section details how many requests (on average) were being held by the IO scheduler when an incoming IO request was being handled. To determine this, **btt** keeps track of how many Q requests came in, and subtracts requests that have been issued (D).

Here is a sample output of this sections:

===== Active Requests At Q Information =====

| DEV | Avg Reqs @ Q |
|-----------|--------------|
| (65, 80) | 12.0 |
| (65,240) | 16.9 |
| ... | |
| (66,112) | 44.2 |

| | | | | | |
|---------|--|-----|------|---|------|
| Overall | | Avg | Reqs | @ | Q |
| Average | | | | | 17.4 |

Detailed Data

In addition to the default sections output, if one supplies the `--all-data` or `-A` argument (see section 11.2) to `btt` further sections are output:

Per Process As traces are emitted, they are tagged with the process ID of the currently running thread in the kernel. The process names are also preserved, and mapped to the ID. For each of the parts of the time line discussed above on page 4, a chart is provided which breaks down the traces according to process ID (name).

One must be aware, however, that the process ID may not have anything to do with the originating IO. For example, if an application is doing buffered IO, then the actual submitted IOs will most likely come from some page buffer management daemon thread (like `pdflush`, or `kjournald` for example). Similarly, completion traces are rarely (if ever?) going to be associated with the process which submitted the IO in the first place.

Here is a sample portion of this type of chart, showing Q2Q times per process:

| | Q2Q | MIN | AVG | MAX | N |
|------------------------|-------------|-------------|-------------|---------|-------|
| ----- | ----- | ----- | ----- | ----- | ----- |
| <code>mkfs.ext3</code> | 0.000000778 | 0.000009074 | 1.797176188 | 1899371 | |
| <code>mount</code> | 0.000000885 | 0.000672513 | 0.030638128 | 73 | |
| <code>pdflush</code> | 0.000000790 | 0.000006752 | 0.247231307 | 179791 | |

Per Process Averages The average columns from the above charts, are also presented in their own chart.

Per Device Similar to the per-process display, `btt` will also break down the various parts of an IOs time line based upon a per-device criteria. Here's a portion of this area, displayed showing the issued to complete times (D2C).

| | D2C | MIN | AVG | MAX | N |
|-----------|-------------|-------------|-------------|--------|-------|
| ----- | ----- | ----- | ----- | ----- | ----- |
| (65, 80) | 0.000140488 | 0.001076906 | 0.149739869 | 169112 | |
| (65, 96) | 0.000142762 | 0.001215221 | 0.173263182 | 155488 | |
| (65,112) | 0.000145221 | 0.001254966 | 0.124929936 | 165726 | |
| (65,128) | 0.000141896 | 0.001159596 | 0.775231052 | 169015 | |
| (65,144) | 0.000140832 | 0.001290985 | 0.211384698 | 210661 | |
| (65,160) | 0.000139915 | 0.001175554 | 0.073512063 | 133973 | |
| (65,176) | 0.000141254 | 0.001104870 | 0.073231310 | 145764 | |
| (65,192) | 0.000141453 | 0.001234460 | 0.167622507 | 140618 | |
| ... | | | | | |

Per Device Averages The average columns from the above charts, are also presented in their own chart.

Q2D Histogram A display of histogram buckets for the Q to D times – basically, from where an IO enters the block IO layer for a given device, and when it is dispatched. The buckets are arranged via the time in seconds, as in:

| ===== Q2D Histogram ===== | | | | | | | | | | |
|---------------------------|-------|-------|-------|-------|-------|-------|-------|-------|-------|-------|
| DEV | <.005 | <.010 | <.025 | <.050 | <.075 | <.100 | <.250 | <.500 | < 1.0 | >=1.0 |
| ----- | ===== | ===== | ===== | ===== | ===== | ===== | ===== | ===== | ===== | ===== |
| (66, 80) | 61.2 | 7.9 | 12.1 | 7.9 | 3.0 | 1.4 | 1.5 | 0.2 | 0.0 | 4.6 |
| (65,192) | 42.3 | 5.0 | 8.7 | 30.0 | 8.9 | 3.0 | 1.8 | 0.1 | 0.0 | 0.1 |
| (65,128) | 34.3 | 5.3 | 8.9 | 32.0 | 9.7 | 3.7 | 5.3 | 0.6 | 0.0 | 0.1 |
| ... | | | | | | | | | | |
| (65, 64) | 59.9 | 4.2 | 6.0 | 24.6 | 4.2 | 0.8 | 0.1 | 0.0 | 0.0 | 0.1 |
| (66, 64) | 62.6 | 8.1 | 12.7 | 7.9 | 2.4 | 0.6 | 0.1 | 0.0 | 0.0 | 5.4 |
| ===== | ===== | ===== | ===== | ===== | ===== | ===== | ===== | ===== | ===== | ===== |
| AVG | 52.9 | 6.2 | 10.0 | 20.1 | 5.3 | 1.7 | 1.4 | 0.2 | 0.0 | 2.1 |

4 Data Files Output

Besides the averages output by default, the following 3 files are also created with data points which may be plotted.

file.dat This file provides a notion of *activity* for the system, devices and processes. The details of this file are provided in section 5.

file_qhist.dat Provides histogram data for the size of incoming IO requests, for more information see section 6.

file_dhist.dat Provides histogram data for the size of IO requests submitted to lower layer drivers, for more information see section 6.

In addition to the default data files output, there are optional data files which can be generated by btt. These include:

subset of .avg data, easily parsed When the `-X` option is specified *and* the `-o` has also been specified, then a subset of the data produced by default is copied to another file that is *more easily parsed*. Refer to section 11.26 for full details.

iostat iostat-like data can be distilled by btt, and is described in section 7.

per IO detail Each and every IO traced can be output in a form that shows each of the IO components on consecutive lines (rather than grepping through a blkparse output file for example). The details on this file is included in section 8.

iostat Latency information – both Q2d, D2c and Q2C – on a per-IO basis can be generated. These are described in section 9.

seek details A set of data files containing all IO-to-IO sector differences can be output, with details found in section 10.

unplug histogram details A data file per device containing histogram output for the amount of IOs released at unplug time. Section 11.23 has more details.

5 Activity Data File

The activity data file contains a series of data values that indicate those periods of time when queue and complete traces are being processed. The values happen to be in a format easily handled by xmgrace⁶, but is easy to parse for other plotting and/or analysis programs.

The file is split into pairs of sets of data points, where each pair contains a set of queue activity and a set of completion activity. The points are presented with the first column (X values) being the time (in seconds), and the second column (Y values) providing an on/off type of setting. For each pair, the Y values have two settings off (low) and on (high). For example, here is a snippet of a file showing some Q activity:

```
# Total System
#      Total System : q activity
0.000000000  0.0
0.000000000  0.4
0.000070381  0.4
0.000070381  0.0
1.023482637  0.0
1.023482637  0.4
6.998746618  0.4
6.998746618  0.0
7.103336799  0.0
7.103336799  0.4
17.235419786  0.4
17.235419786  0.0
26.783361447  0.0
26.783361447  0.4
26.832454929  0.4
26.832454929  0.0
28.870431266  0.0
28.870431266  0.4
28.870431266  0.4
28.870431266  0.0
```

What this indicates is that there was q activity for the system from 0.000000000 through 0.000070381, but was inactive from there to 1.023482637, and so on. Section 11.4 contains details on how to adjust btt's notion of what constitutes activity.

The pairs are arranged as follows:

- First there is the total system activity – meaning activity in either queue or completion traces across all devices.

⁶<http://plasma-gate.weizmann.ac.il/Grace/> “Grace is a WYSIWYG 2D plotting tool for the X Window System and M*tif.”

- Next comes per-device activity information – for each device being traced, that request queues Q and C traces are presented.
- Last we present pairs per-process.

Using this, one is then able to plot regions of activity versus inactivity – and one can gather a sense of deltas between the queueing of IOs and when they are completed. Figure 1 shows a very simplistic chart showing some activity:

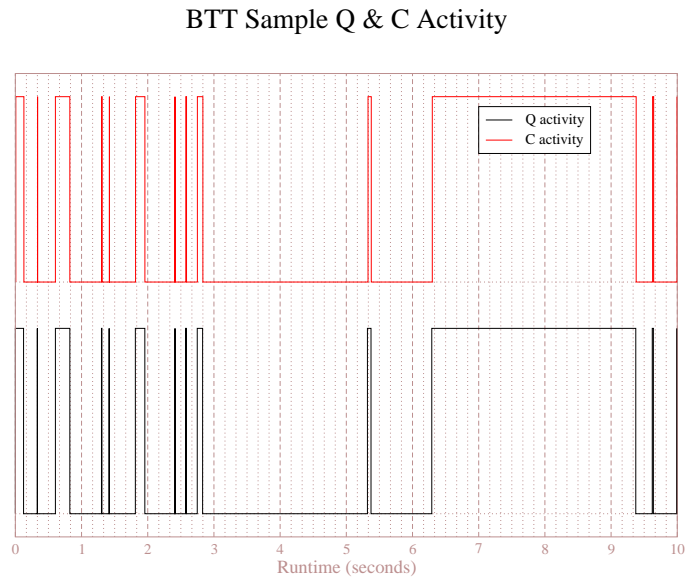


Figure 1: Simple Activity Chart

When the black line (system Q activity) is *high*, then the system is seeing relatively continuous incoming queues. Conversely, when it is low, it represents an extended period of time where no queue requests were coming in. Similarly for the red line and C activity.

6 Histogram Data Files

The histogram data files provide information concerning incoming and outgoing IO sizes (in blocks). For simplicity, the histogram buckets are one-for-one for sizes up to 1,024 blocks in the IO, and then a single bucket for all sizes greater than or equal to 1,024 blocks.

The files are again in grace-friendly format, with the first set containing data for the first 1,023 buckets, and a separate set representing sizes ≥ 1024 blocks. (This is done so that one can easily use a separate formatting specification for the latter set.)

The first column (X values) is the various IO sizes, and the second column (Y values) represents the number of IOs of that size.

Q Histogram Data File

Figure 2 is a sample graph generated from data used during some real-world analysis⁷. With the visual representation provided by this, one can quickly discern some different characteristics between the 3 runs – in particular, one can see that there is only a single red point (representing 8 blocks per IO), whereas the other two had multiple data points greater than 8 blocks.

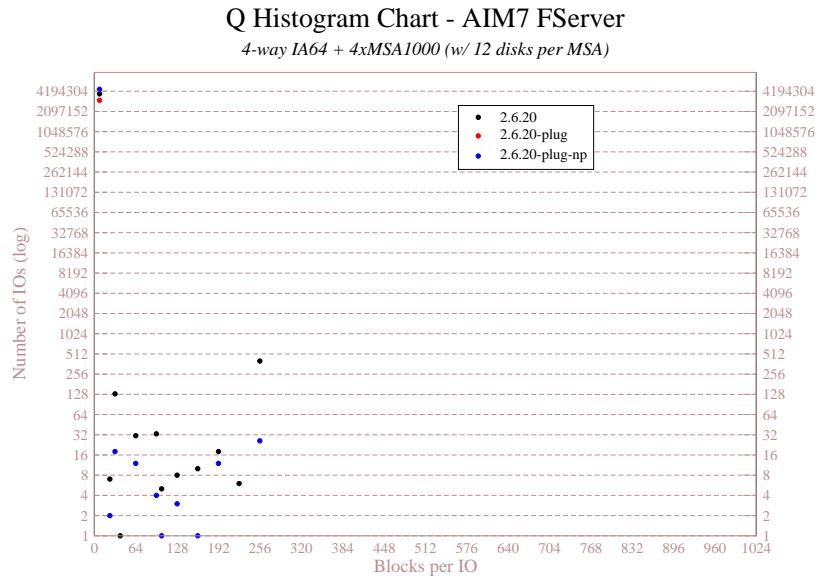


Figure 2: Q Histogram

⁷Note the logarithmic nature of the Y axis for this chart.

D Histogram Data File

Figure 3 is a sample graph generated from data used during some real-world analysis⁸. Again, visually, one can see that the black and blue dots are somewhat similar below about 192 blocks per IO going out. And then one can make the broad generalization of higher reds, lower blues and blacks in the middle.

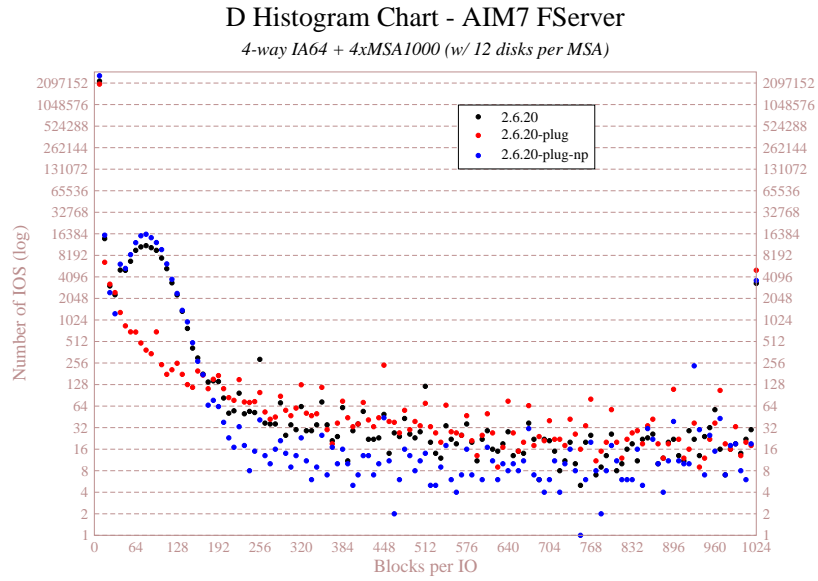


Figure 3: D Histogram

⁸Note the logarithmic nature of the Y axis for this chart.

7 iostat Data File

btt attempts to produce the results from running an `iostat -x` command in parallel with the system as it is being traced. The fields (columns) generated by the `--iostat` or `-I` option can be seen from the following output snippet – note that the line has been split to fit on the printed page:

| Device: | rrqm/s | wrqm/s | r/s | w/s | rsec/s | wsec/s | | |
|----------|--------|----------|----------|----------|--------|-----------|-------|-------|
| | rkB/s | wkB/s | avgrq-sz | avgqu-sz | await | svctm | %util | Stamp |
| ... | | | | | | | | |
| (8, 16) | 0.00 | 0.00 | 0.00 | 1005.30 | 0.00 | 152806.36 | | |
| | 0.00 | 76403.18 | 152.00 | 31.00 | 0.00 | 0.00 | 0.00 | 71.79 |
| ... | | | | | | | | |
| (8, 16) | 1.02 | 5.80 | 0.34 | 1.07 | 4.03 | 55.62 | | |
| | 2.02 | 27.81 | 42.13 | 0.61 | 0.00 | 21.90 | 0.00 | TOTAL |

Note that the STAMP field contains the runtime (in seconds) for that line of data.

8 Per-IO Data File

`btt` can produce a text file containing time line data for each IO processed. The time line data contains rudimentary information for the following stages:

- queue traces
- get request traces
- insert traces
- merge traces
- issue traces
- completion traces
- remap traces

The `-per-io-dump` or `-p` option triggers this behavior, and will produce a file containing streams of IOs (separated by blank spaces). As an example, here is a snippet of 4 IOs that were merged together, you will note there are 3 merged IOs, and 1 inserted in the stream. The issue and completion traces are replicated per IO.

```
66,0 :      0.763283556 Q      6208+8
          0.763300157 I      6208+8
          0.763296365 G      6208+8
          0.763338848 D      6208+32
          0.763705760 C      6208+32

66,0 :      0.763314550 Q      6224+8
          0.763315341 M      6224+8
          0.763338848 D      6208+32
          0.763705760 C      6208+32

66,0 :      0.763321010 Q      6232+8
          0.763321775 M      6232+8
          0.763338848 D      6208+32
          0.763705760 C      6208+32

65,240:     0.763244173 Q      6216+8
          0.763244974 M      6216+8
          0.763374288 D      6208+32
          0.763826610 C      6208+32
```

The columns provide the following information:

1. Device major/minor.

2. Time of the trace (seconds from the start of the run)
3. Trace type
4. start block + number of blocks

9 Latency Data Files

The latency data files which can be optionally produced by `btt` provide per-IO latency information, one for queue time (Q2D), one for total IO time (Q2C) and one for latencies induced by lower layer drivers and devices (D2C).

In both cases, the first column (X values) represent runtime (seconds), while the second column (Y values) shows the actual latency for a command at that time (either Q2D, D2C or Q2C).

10 Seek Data Files

btt can also produce two data files containing all IO-to-IO sector deltas, providing seek information which can then be plotted. The produced data file contains 3 sets of data:

1. Combined data – all read and write IOs
2. Read data – just seek deltas for reads
3. Write data – just seek deltas for writes

The format of the output file names is to have the name generated by the following fields separated by underscores (_):

- The prefix provided as the argument to the **-s** option.
- The major and minor numbers of the device separated by a comma.
- The string **q2q** or **d2d**, indicating the Q2Q or D2D seeks, respectively.
- One of the following characters:
 - r** For read (device to system) IOs
 - w** For write (system to device) IOs
 - c** Combined – both read and write IOs

An example name would be after specifying **-s seek** would be: **seek_065,048.q2q-w.dat**.

The format of the data is to have the runtime values (seconds since the start of the run) in column 1 (X values); and the difference in sectors from the previous IO in column 2 (Y values). Here is a snippet of the first few items from a file:

```
# Combined
0.000034733      35283790.0
0.000106453      35283790.0
0.005239009      35283950.0
0.006968575      35283886.0
0.007218709      35283694.0
0.012145393      35283566.0
0.014980835      -35848914.0
0.024239323      -35848914.0
0.024249402      -35848914.0
0.025707095      -35849072.0
...
```

Figure 4 shows a simple graph that can be produced which provides visual details concerning seek patterns.

BTT Sample Seek Patterns

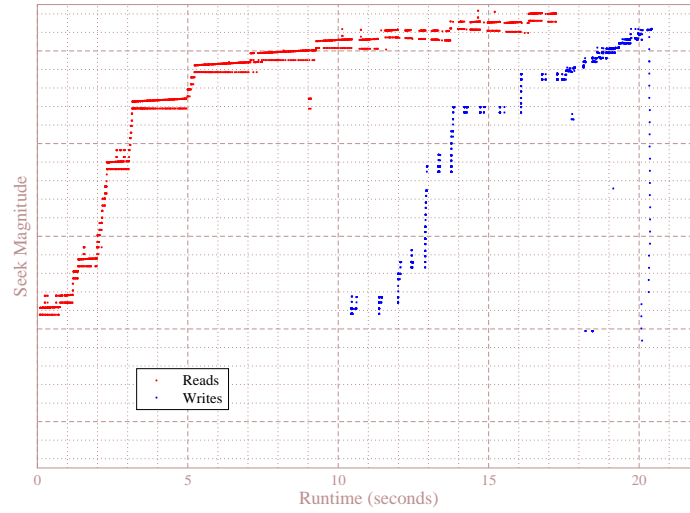


Figure 4: Seek Chart

The seek difference is calculated in one of two ways:

- default** By default, the seek distance is calculated as the *closest* distance between the previous IO and this IO. The concept of *closeness* means that it could either be the *end* of the previous IO and the beginning of the next, or the end of this IO and the start of the next.
- a** If the `-a` or `--seek-absolute` option is specified, then the seek distance is simply the difference between the end of the previous IO and the start of this IO.

10.1 Seeks Per Second

When the `-m` option provides a name, Q2Q and/or D2D seeks will trigger `btt` to output seeks-per-second information. The first column will contain a time value (seconds), and the second column will indicate the number of seeks per second at that point.

When there is only a single data point within a 1-second window, `btt` will just output the time value for the point, and the value 1.0 in the second column. If there is no perceived difference in the times present for the current sample, then the second column's value is the number of seeks present at that time.

Otherwise, if α and Ω are the first and last times seen within a 1-second window, and ν are the number of seeks seen in that time frame, then:

column 1 Midway point in time for this span, or: $\alpha + (\Omega - \alpha)/2$

column 2 Average seeks per second over this span, or: $\nu/(\Omega - \alpha)$

Figure 5 shows a simple pair of graphs generated from `-m` output:

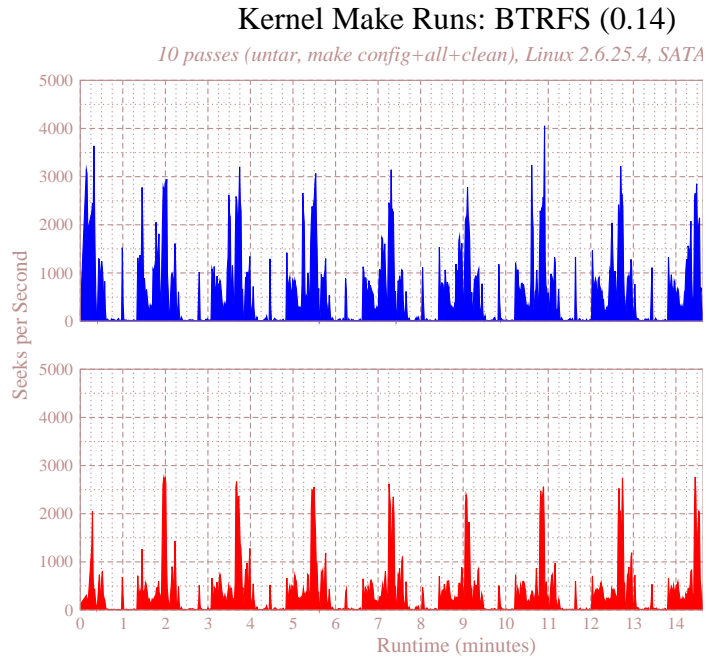


Figure 5: Seeks-per-second Chart

11 Command Line

Usage: btt 2.08

```
[ -a          | --seek-absolute ]
[ -A          | --all-data ]
[ -B <output name> | --dump-blocknos=<output name> ]
[ -d <seconds> | --range-delta=<seconds> ]
[ -D <dev;...> | --devices=<dev;...> ]
[ -e <exe,...> | --exes=<exe,...> ]
[ -h          | --help ]
[ -i <input name> | --input-file=<input name> ]
[ -I <output name> | --iostat=<output name> ]
[ -l <output name> | --d2c-latencies=<output name> ]
[ -L <freq> | --periodic-latencies=<freq> ]
[ -m <output name> | --seeks-per-second=<output name> ]
[ -M <dev map> | --dev-maps=<dev map> ]
[ -o <output name> | --output-file=<output name> ]
[ -p <output name> | --per-io-dump=<output name> ]
[ -P <output name> | --per-io-trees=<output name> ]
[ -q <output name> | --q2c-latencies=<output name> ]
[ -Q <output name> | --active-queue-depth=<output name> ]
[ -r          | --no-remaps ]
[ -s <output name> | --seeks=<output name> ]
[ -S <interval> | --iostat-interval=<interval> ]
[ -t <sec> | --time-start=<sec> ]
[ -T <sec> | --time-end=<sec> ]
[ -u <output name> | --unplug-hist=<output name> ]
[ -V          | --version ]
[ -v          | --verbose ]
[ -X          | --easy-parse-avgs ]
[ -z <output name> | --q2d-latencies=<output name> ]
```

11.1 --seek-absolute/-a

When specified on the command line, this directs btt to calculate seek distances based solely upon the ending block address of one IO, and the start of the next. By default btt uses the concept of the closeness to either the beginning or end of the previous IO. See section 10 for more details about seek distances.

11.2 --all-data/-A

Normally btt will not print out verbose information concerning per-process and per-device data (as outlined in section 3). If you desire that level of detail you can specify this option.

11.3 --dump-blocknos/-B

This option will output absolute block numbers to three files prefixed by the specified output name:

prefix_device_r.dat All read block numbers are output, first column is time (seconds), second is the block number, and the third column is the ending block number.

prefix_device_w.dat All write block numbers are output, first column is time (seconds), second is the block number, and the third column is the ending block number.

prefix_device_c.dat All block numbers (read and write) are output, first column is time (seconds), second is the block number, and the third column is the ending block number.

11.4 --range-delta/-d

Section 5 discussed how **btt** outputs a file containing Q and C activity, the notion of *active* traces simply means that there are Q or C traces occurring within a certain period of each other. The default value is 0.1 seconds; with this option allowing one to change that granularity. The smaller the value, the more data points provided.

11.5 --devices/-D

Normally, **btt** will produce data for all devices detected in the traces parsed. With this option, one can reduce the analysis to one or more devices provided in the string passed to this option. The device identifiers are the major and minor number of each device, and each device identifier is separated by a colon (:). A valid specifier for devices 8,0 and 8,8 would then be: "8,0:8,8".

11.6 --exes/-e

Likewise, **btt** will produce data for all processes (executables) found in the traces. With this option, one can specify which processes you want displayed in the output. The format of the string passed is a list of executable *names* separated by commas (.). An example would be "-e mkfs.ext3,mount".

11.7 --help/-h

Prints out the simple help information, as seen at the top of section 11.

11.8 --input-file/-i

Specifies the binary input file that **btt** will interpret traces in. See section 2 for information concerning binary trace files.

11.9 --iostat/-I

This option triggers **btt** to generate iostat-like output to the file specified. Refer to section 7 for more information on the output produced.

11.10 --d2c-latencies/-l

This option instructs **btt** to generate the D2C latency file discussed in section 9.

11.11 --periodic-latencies/-L

When given a value greater than 0, this option will create two data files (q2c & d2c) per device containing a periodic timestamp & average latency over that period.

11.12 --seeks-per-second-m

Tells **btt** to output seeks per second information. Each device being measured can have up to 2 files output: One with Q2Q information and one with D2D seek information. Information on the output produced can be found in section 10.1.

Note: This requires seek output to be selected – see section 10.

11.13 --dev-maps/-M

Internal option, still under construction.

11.14 --output-file/-o

Normally **btt** sends the statistical output (covered in section 3) to standard out, if you specify this option this data is redirected to the file specified.

11.15 --per-io-dump/-p

This option tells **btt** to generate the per IO dump file as discussed in section 8.

11.16 --per-io-tress/-P

The -P option will generate a file that contains a list of all IO "sequences" - showing only the Q, D & C operation times. The D & C time values are separated from the Q time values with a vertical bar.

11.17 --q2c-latencies/-q

This option instructs **btt** to generate the Q2C latency file discussed in section 9.

11.18 --active-queue-depth/-Q

This option tells **btt** to generate a data file (using the given name as a base) which contains: A time stamp in the first column, and then the number of *active* requests issued to the device driver. (The value is incremented when an *issue* is performed, and decremented when a *complete* is performed).

11.19 --no-remaps/-r

Ignore remap traces; older kernels did not implement the full remap PDU.

11.20 --seeks/-s

This option instructs **btt** to generate the seek data file discussed in section 10.

11.21 --iostat-interval/-S

The normal **iostat** command allows one to specify the snapshot interval, likewise, **btt** allows one to specify how many seconds between its generation of snapshots of the data via this option. Details about the iostat-like capabilities of **btt** may be found in section 7.

11.22 --time-start/-t and --time-end/T

*This **btt** capability is still under construction, results are not always consistent at this point in time.*

These options allow one to dictate to **btt** when to start and stop parsing of trace data in terms of seconds since the start of the run. The trace chosen will be between the start time (or 0.0 if not specified) and end time (or the end of the run) specified.

11.23 --unplug-hist/-u

This option instructs **btt** to generate a data file containing histogram information for *unplug* traces on a per device basis. It shows how many times an unplug was hit with a specified number of IOs released. There are 21 output values into the file, as follows:

| X value | Representing Counts |
|---------|---------------------|
| 0 | 0...4 |
| 1 | 5...9 |
| 2 | 10...14 |
| ... | |
| 19 | 95...99 |
| 20 | 100+ |

The file name(s) generated use the text string passed as an argument for the prefix, followed by the device identifier in `major,minor` form, with a `.dat` extension (as an example, with `-u up_hist` specified on the command line: `up_hist_008,032.dat`).

11.24 `--version/-V`

Prints out the `btt` version, and exits.

11.25 `--verbose/-v`

While `btt` is processing data, it will put out periodic (1-second granularity) values describing the progress it is making through the input trace stream. The value describes how many traces have been processed. At the end of the run, the overall number of traces, trace rate (number of thousands of traces per second), and the real time for trace processing and output are displayed. Example (note: the interim trace counts are put out with carriage returns, hence, they overwrite each time):

```
# btt -i bp.bin -o btt -v
Sending range data to bttX.dat
Sending stats data to bttX.avg
 287857 t
1414173 t
1691581 t
...
4581291 traces @ 279.7 Ktps
16.379036+0.000005=16.379041
```

11.26 `--easy-parse-avgs/-X`

Some of the data produced by default can also be shipped simultaneously to another file in an easy to parse form. When the `-o` option is selected (thus producing a file with a `.avg` extension), *and* the `-X` flag is present, then `btt` will generate this file.

The format is space-delimited values starting with a 3-character *record* indicator, then the device information (either `major,minor` or the device name when `-M` is specified), and then a number of fields representing data values. The following table shows the record identifiers and the fields provided:

| Record | Description |
|---|---|
| DMI | Device Merge Information: #Q #D Ratio BLKmin BLKavg BLKmax Total |
| QSK | Device Q2Q Seek Information: NSEEKS MEAN MEDIAN MODE N-MODE mode. . . |
| DSK | Device D2D Seek Information: NSEEKS MEAN MEDIAN MODE N-MODE mode. . . |
| PLG | Plug Information: #Plugs #TimerUnplugs %TimeQPlugged |
| UPG | Unplug Information: IOsPerUnplug IOsPerUnplugTimeout |
| ARQ | Active Requests at Q Information: AvgReqs@Q |
| Q2Q Q2G S2G G2I Q2M I2D M2D D2C Q2C | Queue-to-Queue times: Queue-to-GetRequest times: Sleep-to-GetRequest times: GetRequest-to-Insert times: Queue-to-Merge times: Insert-to-Issue times: Merge-to-Issue times: Issue-to-Complete times: Queue-to-Complete times: MIN AVG MAX N |

A sample output file would look like:

```

Q2Q 0.000000001 0.003511356 9.700000000 309906
Q2G 0.000000001 0.774586535 805.300000000 106732
S2G 0.000000001 0.072525952 0.370000000 578
G2I 0.000000001 0.000001125 0.010000000 106732
Q2M 0.000000001 0.730763626 751.820000000 204040
I2D 0.000000001 1.270720538 612.880000000 106948
M2D 0.000000001 0.992355230 428.930000000 203114
D2C 0.000000001 0.008681311 137.020000000 307343
Q2C 0.000000001 1.304370794 805.660000000 308921
DMI 8,16 309907 106729 2.903681286 8 182 1024 19504768
QSK 8,16 309907 167200.935561314 0 0 235708
DSK 8,16 106729 433247.436563633 0 0 33974
PLG 8,16 40824 382 0.008881420
UPG 8,16 1.993361748 1.866492147
ARQ 8,16 12.938165321

```

11.27 --q2d-latencies/-l

This option instructs **btt** to generate the Q2D latency file discussed in section 9.

12 bno_plot.py

Included with the distribution is a simple 3D plotting utility based upon the block numbers output when `-B` is specified (see section 11.3 for more details about the `-B` option). The display will display *each* IO generated, with the time (seconds) along the X-axis, the block number (start) along the Y-axis and the number of blocks transferred in the IO represented along the Z-axis.

The script requires Python⁹ and gnuplot¹⁰, and will enter interactive mode after the image is produced. In this interactive mode one can enter gnuplot commands at the `'gnuplot>'` prompt, and/or can change the viewpoint within the 3D image by *left-click-hold* and moving the mouse. A sample screen shot can be seen in figure 6 on page 31.

bno_plot.py Command Line Options

```
$ bno_plot.py --help
```

```
bno_plot.py
[ -h | --help      ]
[ -K | --keys-below ]
[ -v | --verbose   ]
[ <file...>       ]
```

Utilizes gnuplot to generate a 3D plot of the block number output from btt. If no `<files>` are specified, it will utilize all files generated after btt was run with `-B` blknos (meaning: all files of the form `blknos*[rw].dat`).

The `-K` option forces `bno_plot.py` to put the keys below the graph, typically all keys for input files are put in the upper right corner of the graph. If the number of devices exceed 10, then `bno_plot.py` will automatically push the keys under the graph.

To exit the plotter, enter `'quit'` or `^D` at the `'gnuplot>'` prompt.

⁹www.python.org

¹⁰www.gnuplot.info

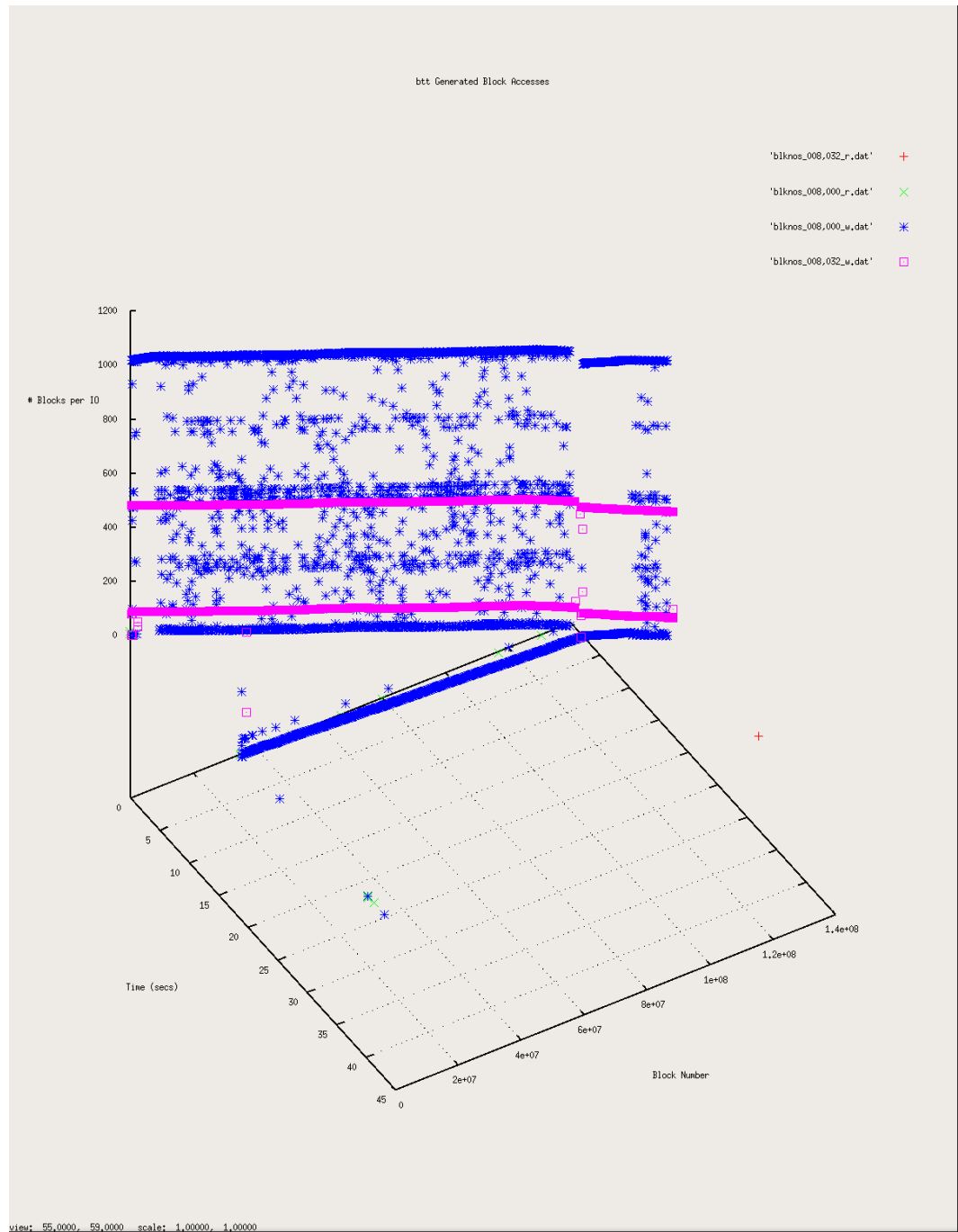


Figure 6: Sample bno_plot.py Screen Shot

13 Sample btt Output

Here is a complete output file from a btt run, illustrating a lot of the capabilities of btt.

===== All Devices =====

| | ALL | MIN | AVG | MAX | N |
|-------|-------------|-------------|--------------|-----|--------|
| Q2Qdm | 0.000001260 | 0.000078915 | 14.504199709 | | 491531 |
| Q2Adm | 0.000000398 | 0.001184212 | 43.228889856 | | 491566 |
| Q2Q | 0.000000455 | 0.000009032 | 1.811181609 | | 491566 |
| Q2G | 0.000000466 | 0.002396857 | 0.203392940 | | 8756 |
| G2I | 0.000000142 | 0.000000461 | 0.000096257 | | 8756 |
| Q2M | 0.000000230 | 0.000000433 | 0.000173083 | | 482810 |
| I2D | 0.000000999 | 0.407286973 | 0.982146009 | | 8756 |
| M2D | 0.000001251 | 0.356512650 | 0.982143260 | | 482810 |
| D2C | 0.000057729 | 0.037337508 | 2.011319687 | | 491566 |
| Q2C | 0.000060550 | 0.394797701 | 2.035625308 | | 491566 |

===== Device Overhead =====

| DEV | Q2G | G2I | Q2M | I2D | D2C |
|----------|---------|---------|---------|----------|----------|
| (8, 0) | 0.3104% | 0.0004% | 0.0003% | 58.9079% | 41.0914% |
| (8, 32) | 0.5858% | 0.0001% | 0.0001% | 98.3852% | 1.6146% |
| Overall | 0.0957% | 0.0000% | 0.0010% | 16.2534% | 83.6500% |

===== Device Merge Information =====

| DEV | #Q | #D | Ratio | BLKmin | BLKavg | BLKmax | Total |
|----------|--------|-------|-------|--------|--------|--------|---------|
| ----- | ----- | ----- | ----- | ----- | ----- | ----- | ----- |
| (8, 0) | 246812 | 3970 | 62.2 | 2 | 497 | 1024 | 1974490 |
| (8, 32) | 244754 | 4786 | 51.1 | 8 | 409 | 488 | 1958032 |
| ----- | ----- | ----- | ----- | ----- | ----- | ----- | ----- |
| DEV | #Q | #D | Ratio | BLKmin | BLKavg | BLKmax | Total |
| TOTAL | 491566 | 8756 | 56.1 | 2 | 449 | 1024 | 3932522 |

===== Device Q2Q Seek Information =====

| DEV | NSEEKS | MEAN | MEDIAN | MODE |
|----------|--------|--------|--------|-----------|
| ----- | ----- | ----- | ----- | ----- |
| (9, 0) | 491532 | 2693.5 | 0 | 0(489746) |
| (8, 0) | 246812 | 2682.4 | 0 | 0(245021) |
| (8, 32) | 244754 | 1355.3 | 0 | 0(243795) |
| ----- | ----- | ----- | ----- | ----- |
| Overall | NSEEKS | MEAN | MEDIAN | MODE |
| Average | 983098 | 2357.6 | 0 | 0(978562) |

===== Device D2D Seek Information =====

| DEV | NSEEKS | MEAN | MEDIAN | MODE |
|----------|--------|----------|--------|---------|
| ----- | ----- | ----- | ----- | ----- |
| (8, 0) | 3970 | 219326.9 | 0 | 0(2177) |
| (8, 32) | 4786 | 69254.5 | 0 | 0(3828) |
| ----- | ----- | ----- | ----- | ----- |
| Overall | NSEEKS | MEAN | MEDIAN | MODE |
| Average | 8756 | 137297.8 | 0 | 0(6005) |

===== Plug Information =====

| DEV | # Plugs | # Timer Us | % Time Q Plugged |
|----------|---------|------------|------------------|
| ----- | ----- | ----- | ----- |
| (8, 0) | 1152(| 137) | 0.107460846% |
| (8, 32) | 5(| 0) | 0.000175916% |
| ----- | ----- | ----- | ----- |
| Overall | # Plugs | # Timer Us | % Time Q Plugged |
| Average | 578(| 68) | 0.053818381% |

===== Active Requests At Q Information =====

| DEV | Avg Reqs @ Q |
|----------|--------------|
| ----- | ----- |
| (8, 0) | 11.1 |
| (8, 32) | 133.0 |
| ----- | ----- |
| Overall | Avg Reqs @ Q |
| Average | 71.8 |

===== Q2D Histogram =====

| DEV | <.005 | <.010 | <.025 | <.050 | <.075 | <.100 | <.250 | <.500 | < 1.0 | >=1.0 |
|----------|-------|-------|-------|-------|-------|-------|-------|-------|-------|-------|
| ----- | ===== | ===== | ===== | ===== | ===== | ===== | ===== | ===== | ===== | ===== |
| (8, 0) | 80.5 | 3.5 | 1.0 | 1.0 | 0.7 | 0.6 | 4.0 | 5.3 | 3.4 | 0.0 |
| (8, 32) | 0.3 | 0.0 | 0.3 | 0.2 | 0.2 | 0.2 | 1.7 | 2.0 | 95.2 | 0.0 |
| ===== | ===== | ===== | ===== | ===== | ===== | ===== | ===== | ===== | ===== | ===== |
| AVG | 40.5 | 1.8 | 0.6 | 0.6 | 0.4 | 0.4 | 2.8 | 3.7 | 49.1 | 0.0 |